

POSTER PRESENTATIONS

- 12 **Broadband optical chirality enhancement in 3D plasmonic Archimedean spiral for chiral sensing** // Min Jiang (Jena)
- 13 **Flexible Silver-Coated Gold Nanoparticles Loaded Graphene textiles for Direct Detection of Imidacloprid Pesticide via Label-Free SERS** // Sujia Jiao (Jena)
- 14 **SERS detection of benzotriazole for wastewater treatment** // Klaudzia Kamiak (Jena)
- 15 **Plasmon-Induced Photopolymerization of Molecularly Imprinted Polymers for Nanosensor Applications** // Amine Khitous (Mulhouse)
- 16 **Conformational Dynamics of Hsp90** // Florian Köfler (Mainz)
- 17 **Interaction between DNA and gold nanoparticles investigated by fluorescent probes** // Wouter Koopman (Potsdam)
- 18 **Hybrid Nanostructures** // Rasheequddin Kuzhimpadath (Jena)
- 19 **Gold nanoparticle-facilitated assembly of supernatant transfer enables the rapid determination in the discovery of ssDNA aptamers specific to steroid hormones** // Jeong Min Lee (Seoul)
- 20 **Label-free detection of SARS-CoV-2 (RBD) by surface plasmon resonance** // Mary Carmen Licuona Puma (Jena)
- 21 **Immobilised gold and silver nanoparticles for an optofluidic SERS platform** // Anant Mantha (Berlin)
- 22 **Development of a low-cost filter membrane based on cannabis sativa for the reduction of bacterial loads in non-potable domestic water in certain regions of the capital through green synthesis** // Yehidi Julieth Medina Castillo (Bogota)
- 23 **Synthesis of plasmonic nanoparticles and bulk sensitivity investigation for advancing LSPR sensing technology** // Olesia Petrova (Jena)
- 24 **Development of a Lateral Flow Assay Biosensor for miRNA-34a and miRNA-155 Detection Utilizing the Rolling Circle Amplification** // Farzad Rahbar Kouibaran (Bologna)
- 25 **Investigation of plasmonic enhancement of hyper Raman and Raman scattering** // Fariha Binte Rahman (Berlin)
- 26 **LSPR studies of protein-DNA interactions** // Florian Seier (Jena)
- 27 **Probing intracellular interactions with SERS in the presence of a fluorescent dye** // Cecilia Spedalieri (Berlin)
- 28 **Numerical Demonstration of Archimedean spiral with highest dissymmetry factor** // Karthika Sunil (Jena)
- 29 **SERS for cytosine methylation detection: a step toward epigenetic biomarkers** // Gennadii Ustinov (Jena)
- 30 **Silver nanoparticle decorated titania and zinc oxide nanowires by MS-ALD for Photocatalytic dye degradation** // Mario Ziegler (Jena)

LOCATION

- 1 Leibniz IPHT, Campus Beutenberg
- 2 Dorint Hotel Esplanade Jena
- 3 Hotel Schwarzer Bär
- 4 Hotel Maxx
- 5 Hotel Best Western
- 6 Bus No. 10, 11, 12
- 7 Ernst Haeckel Monument
- 8 Botanical Garden
- 9 Hotel Noll
- 10 B&B Hotel Jena



LEIBNIZ INSTITUTE OF PHOTONIC TECHNOLOGY

Nanobiophotonics Department

Albert-Einstein-Str. 9

07745 Jena

Phone: 0049 3641 206-304 (Office), -371 (Conference Desk)

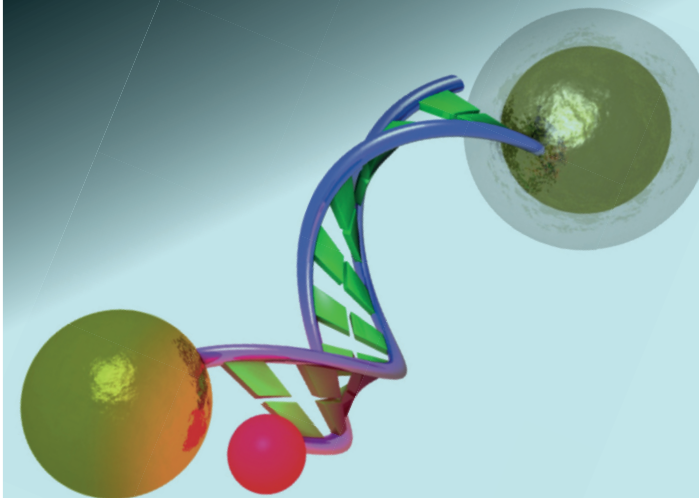
wolfgang.fritzsche@leibniz-ipht.de

<https://www.biophotonics4future.com/plasmonics2025/>

www.leibniz-ipht.de



Leibniz ipht
LEIBNIZ INSTITUTE OF PHOTONIC TECHNOLOGY



MOLECULAR PLASMONICS 2025

MAY 15 – 17, 2025

Leibniz IPHT // Campus Beutenberg // Jena

www.leibniz-ipht.de



DFG

LEIBNIZ HEALTH TECHNOLOGIES
eureka
Innovation beyond borders

Leibniz
Association

PROGRAM

THURSDAY, MAY 15, 2025

Leibniz IPHT, Campus Beutenberg

Bus no. 10, 11, 12

Satellite-Workshop "DNA Mitteldeutschland"
(free to join)

12:00 Get-Together & Lunch Buffet

13:00 Presentations

17:00 END

Bus to downtown + 10 min walk, or appr. 40 min walk

Botanical Garden, Downtown

Entrance Fürstengraben 26

18:00 Get-Together // Guided Tours

19:30 DINNER

FRIDAY, MAY 16, 2025

Leibniz IPHT, Campus Beutenberg

Bus no. 10, 11, 12

8:00 Registration

9:00 Opening & Introduction // Wolfgang Fritzsche

9:05 **Session 1**
Catalytic Plasmonic Nanoparticles and Their Applications // Itamar Willner (Jerusalem)

The Importance of Surface Sensitivity in the Optimization of Plasmonic Sensors // Attila Bonyár (Budapest)

Challenges in Fabrication of LSPR Sensors for Molecular Detection // Tomáš Lednický (Jena)

10:20 COFFEE BREAK

11:00 **Session 2** // Itamar Willner
Organic Excitonic Nanostructures for Metal-free Plasmonics // Jussi Toppari (Jyväskylä)

Stark Control of Plexcitonic States in Incoherent Quantum Systems // Hira Asif (Antalya)

Quantitative Photocurrent Scanning Probe Microscopy of Plasmon-Coupled Quantum Dots // Joachim Krenn (Graz)

Molecular Vibrations for Quantum-Enhanced Imaging and Spectroscopy // Markus Raschke (Boulder CO)

12:40 LUNCH

14:00 **Session 3** // Markus Raschke
Surface Lattice Resonances for High-Performance Sensing: A Study on Gold Nanoparticle Arrays // Cesar Herreno (Bogota)

Self-Assembled Plasmonic Lattices and Their Applications // Tomas Tamulevičius (Kaunas)

CuFeS₂ Semiconductor Nanocrystals: An Alternate Plasmonic Catalyst // Biswajit Bhattacharyya (Potsdam)

Metal Photoluminescence as Probe for Hot Electrons // Wouter Koopman (Potsdam)

Plasmon-Induced Regioselective Grafting of Colloidal Gold at Hot Spots: Boosting Light Emission Efficiency // Nordin Felidj (Paris)

Poster Pitch Talks // Menbere Mekonnen

16:20 COFFEE BREAK & POSTER SESSION

17:00 Excursion // Hike to Ernst Haeckel Monument

19:00 POSTER & BEER (& BARBECUE)

SATURDAY, MAY 17, 2025

Leibniz IPHT, Campus Beutenberg

Bus 10 leaves 8:35 a.m. downtown

9:00 **Session 4** // Joachim Krenn
Plasmonic Actuating and Continuous Monitoring Biosensing // Jakub Dostalek (Prague)

Plasmonic Single Molecule Detection Enhanced by DNA Nanostructure // Naoto Asai (Wiener Neustadt)

Optimizing Light for Plasmon Enhancement // Volker Deckert (Jena)

Altering the SERS Spectra of Molecules on Nanostructured Surfaces by Laser Focusing / Defocusing // Cosmin Farcău (Cluj-Napoca)

10:40 COFFEE BREAK

11:00 **Session 5** // Jussi Toppari
Morphological Adjustment of Gold Nanoparticles AuNPs Through Polydispersants // Daniel Llamasa (Bogota)

From Development to Detection: Dendritic Nanostructures in SERS for Advanced Biomolecular Analysis // Aradhana Dwivedi (Jena)

Large-Scaled Plasmonic Assemblies for Efficient SERS Enhancements // Swagato Sarkar (Dresden)

Molecular Effects of NBD-Cl and NBD-Ceramide on Living Cells Using SERS // Yiqing Feng (Berlin)

12:40 END OF THE SESSIONS & LUNCH

POSTER PRESENTATIONS

- 01 Towards better characterization and control of protein-gold nanoparticle interactions // Shrobona Banerjee (Berlin)
- 02 Evaluation of health risks of Whole-Body Electromyostimulation (WB-EMS) based on electrophysiological and biochemical characterization // Steffen Derlien (Jena)
- 03 Tunable Dielectric-Loaded Metasurface for Directional Excitation of Surface Plasmon Polaritons with Linear or Circular Polarization // Abhrodeep Dey (Jena)
- 04 Raman-based Detection of Natural Products in Microbial Communication // Tony Dib (Jena)
- 05 Tailored Optical System for Advanced Characterization and Analysis of LSPR Biosensors // László Domján (Budapest)
- 06 Water contaminants probed by plasmonic nanoarray using aptamer receptors // Lukas Dubbert (Jena)
- 07 Point-of-care diagnostics potential of cerumen: vibrational spectroscopy meets machine learning // Edoardo Farnesi (Jena)
- 08 Aptamer-conjugated SERS detection scheme for wastewater treatment // Arna Ghosh (Jena)
- 09 Determination of in vivo and in vitro DNA Binding Affinities of Human BCL6 protein // Dhaarna Gobin (Jena)
- 10 Nanocube Quadromer for Efficient LSPR Biosensing // Hovhannes Haroyan (Yerewan)
- 11 Tip enhanced luminescence of gold nanoparticles // Andreas Hohenau (Graz)